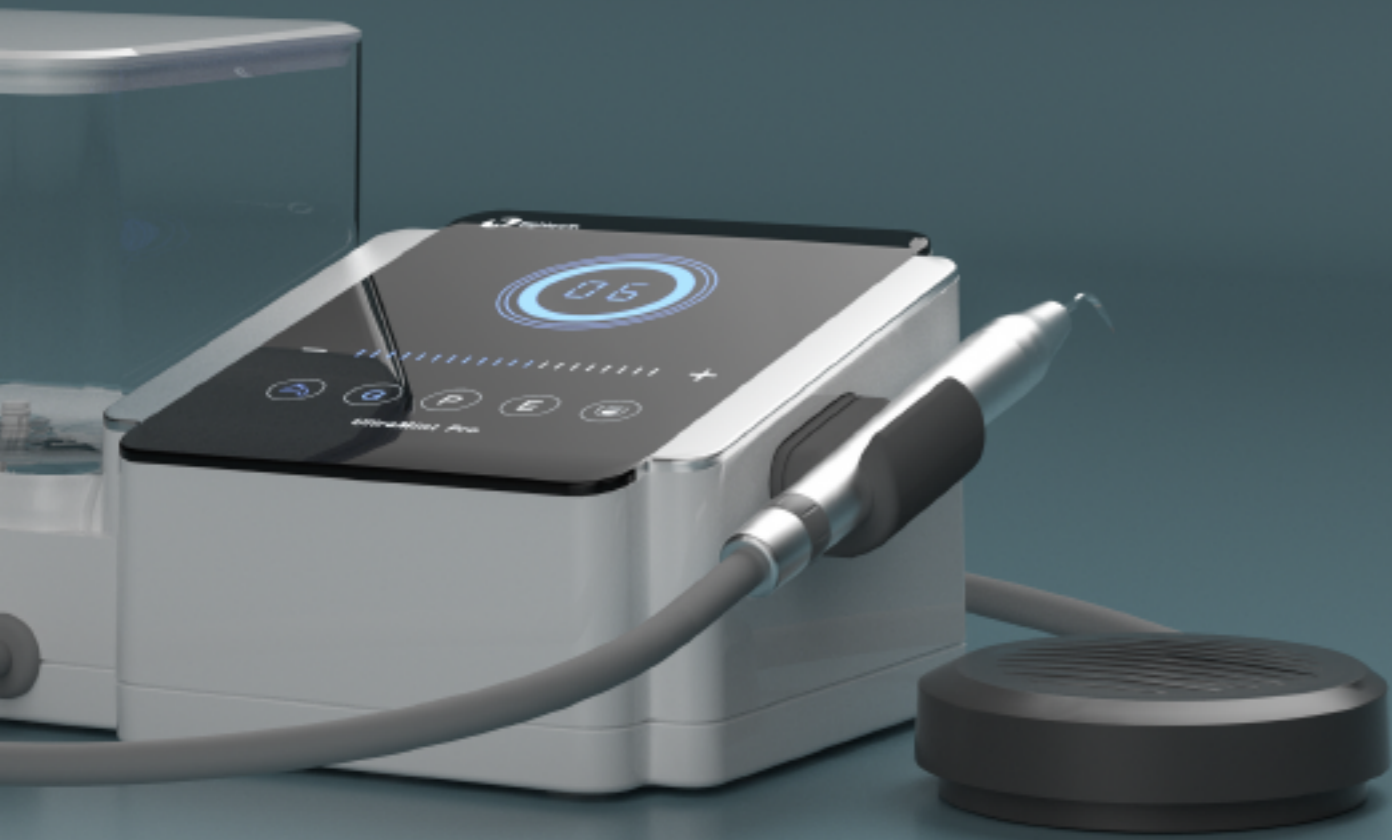


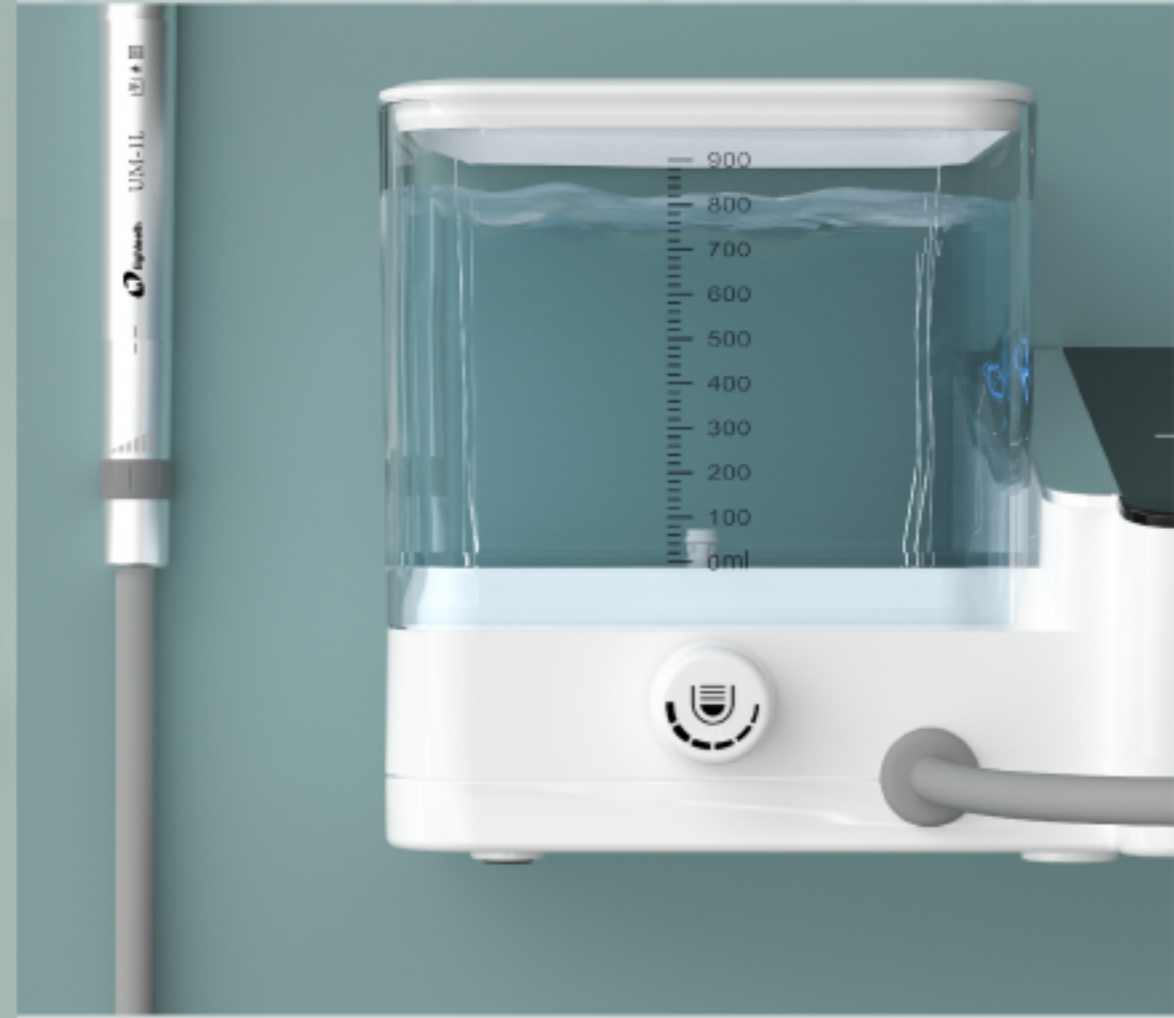
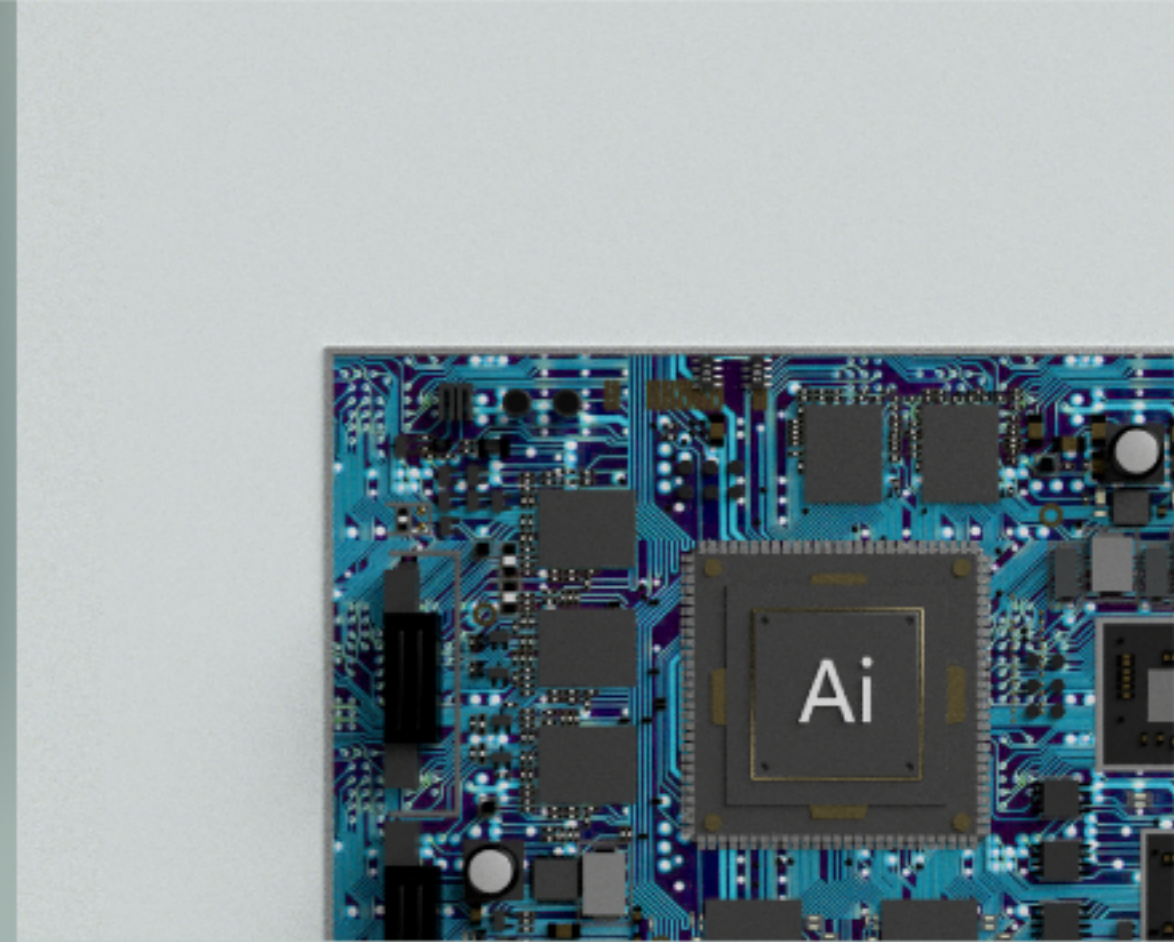


It's time for
UltraMint
Pro!



3 In 1

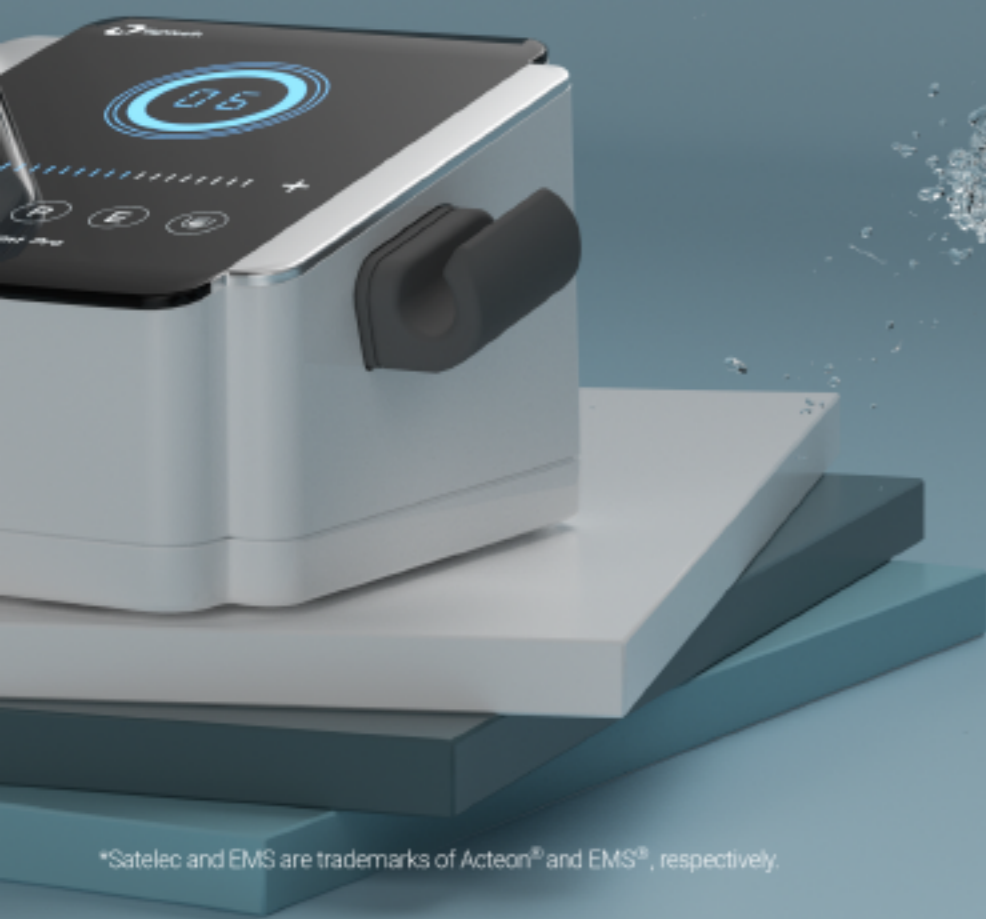
Scaling | Periodontic | Endodontic



One scaler, 2 solutions

Wide range of frequency: 25kHz-42kHz

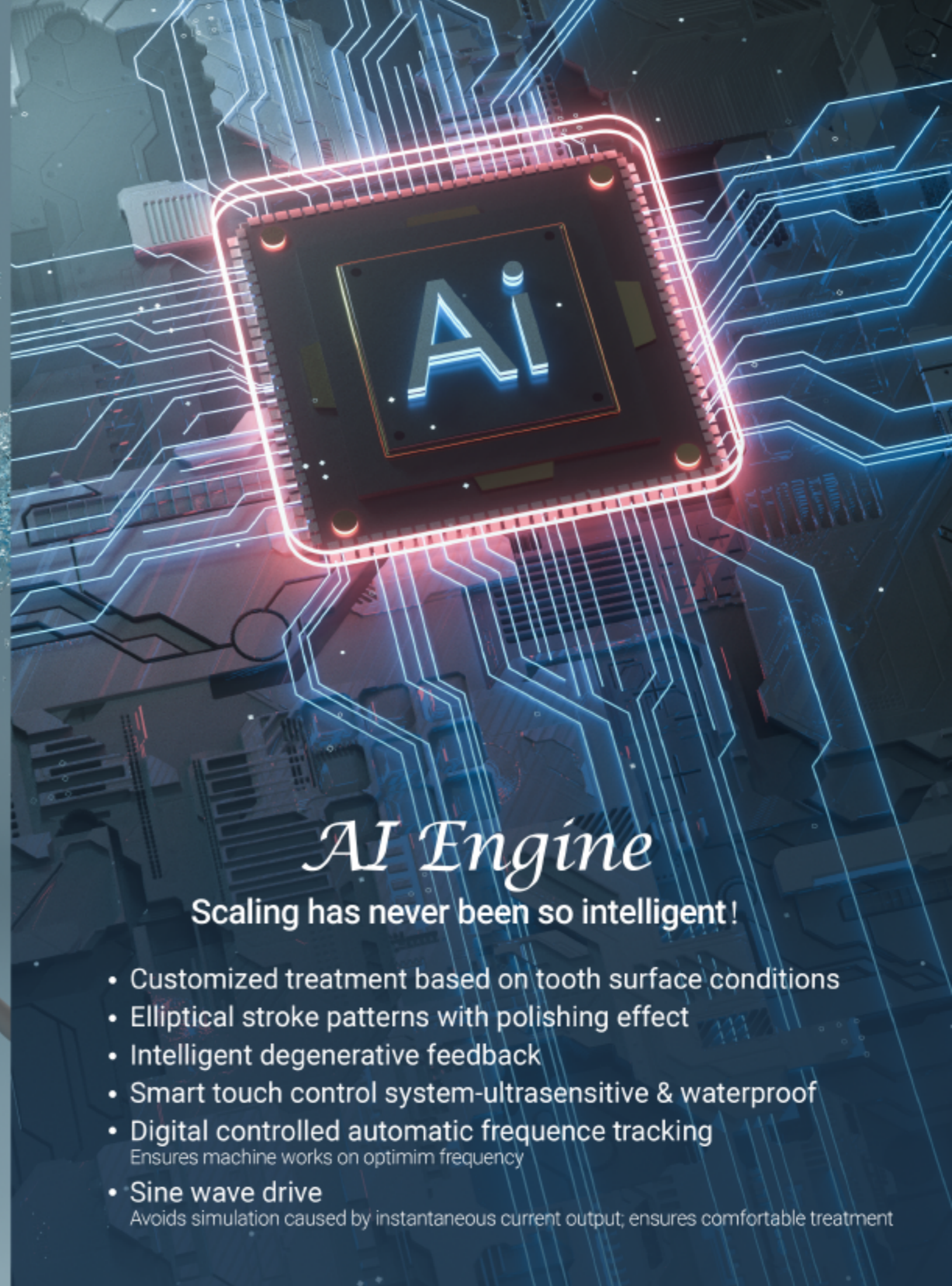
- We are proud to give you two solutions to perform at your best- both handpieces (EMS type and Satelec type) provided by Eighteeth are compatible with UltraMint & UltraMint Pro.*
Scaling can be as convenient as you can imagine.



• Satelec type

• EMS type

*Satelec and EMS are trademarks of Acteon® and EMS®, respectively.



AI Engine

Scaling has never been so intelligent!

- Customized treatment based on tooth surface conditions
- Elliptical stroke patterns with polishing effect
- Intelligent degenerative feedback
- Smart touch control system-ultrasensitive & waterproof
- Digital controlled automatic frequency tracking
Ensures machine works on optimum frequency
- Sine wave drive
Avoids simulation caused by instantaneous current output; ensures comfortable treatment



Autoclavable plastic box - tips*6, universal wrench*1, EMS type handpiece*1

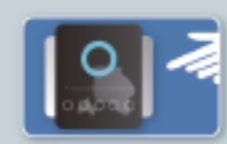


Autoclavable plastic box - tips*6, universal wrench*1, Satelec type handpiece*1



*Applicable for all tips from Eighteeth

Smart touch system-ultrasensitive & waterproof



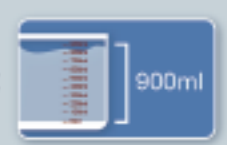
Intelligent self-cleaning-makes disinfection easy and avoids cross-infection



Two ways of water supply- Changing supply methods is easier than ever before



900ml stand-alone bottle with clear 20ml scale mark makes it convenient for formulating liquid.



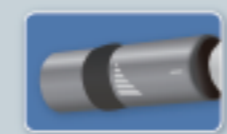
Detachable handpiece with LED- autoclavable, ergonomic, brighter visibility



Detachable and autoclavable handpiece holder, resists cross-infection



Water control directly from handpiece



Ergonomic foot pedal



Soft Perio power for ultimate comfort



1 scaler, 2 solutions

Scaling



Periodontic



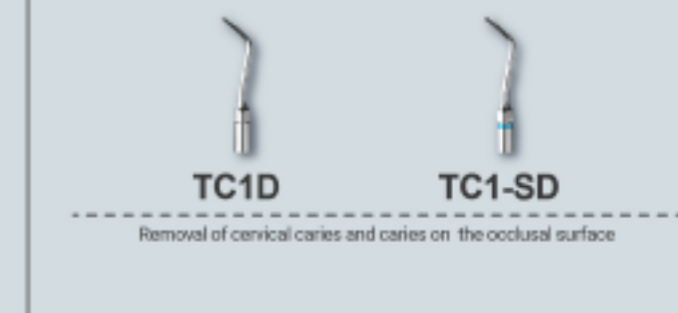
Endodontic



Endodontic



Cavity Preparation



*Satelec and EMS are trademarks of Acteon® and EMS®, respectively.

*Satelec and EMS are trademarks of Acteon® and EMS®, respectively.