



dentair

MANUAL - FOZKYGB-03

A BRYANT DENTAL PRODUCT

Pioneering Safer Dentistry

Combining innovative technology with outstanding design, we bring you a sophisticated dental air purification system to ensure the highest levels of protection and reassurance for your team and your patients.

Our world-class DentAir® system eliminates the invisible contaminants in a room and disperses clean air that's free from viruses, bacteria and particulates. With its ultra-high power 24W UVC technology, 360-degree air intake and five-stage filtration process, it's quick, efficient and quiet, allowing you to work safely without disruption. Designed and developed for quality and longevity with widely trusted technology, DentAir® gives you peace of mind, with the exceptional levels of service you can be sure of from Bryant Dental.



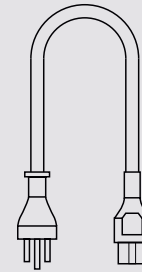
**Follow Instructions for use
before opening the appliance.**



**Appliances that are obviously
damaged must not be operated.**



Installation



①

Take out the power cord

Unpack the product and take out the power cord.

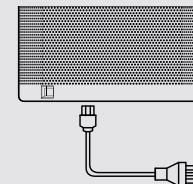
②

Insert UVC Bulb

Follow instructions on Page 05.

③

Turn on the power



Connect the power cord at the bottom of the unit power supply interface, and then plug into a power supply.

Filters

Pre-filter

This consists of an omnidirectional antibacterial fibre mesh fabric capable of capturing and filtering large particles such as dust, hairs and skin flakes. This prolongs the lifespan of the HEPA filter and improves system efficiency.

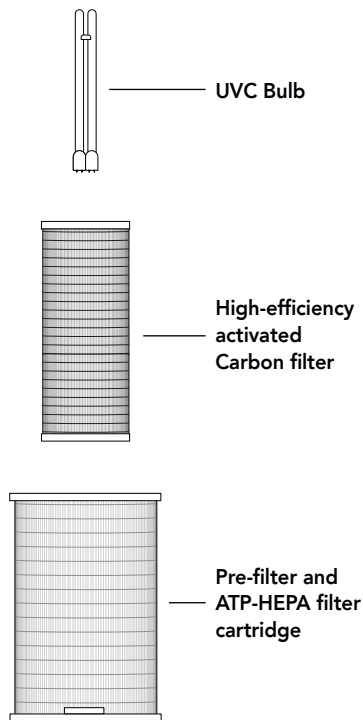
ATP-HEPA antimicrobial peptide filter

High-density ATP-HEPA antimicrobial peptide filter to remove airborne particulate matter with a mean aerodynamic diameter of 2.5 μm .

High-efficiency activated carbon layer

This is a large honeycomb-structured filter which works to remove harmful substances such as mercury and benzene. It can subsequently reduce dental odours in the surgery.

Please visit the DentAir® website to buy high-performance combined filters.



Changing the filters



Please use regular PPE when changing the filters and dispose in clinical waste.

1

Disconnect the power supply and ensure the unit is off.

2

Turn the bottom cover anti-clockwise to access the filters.

3

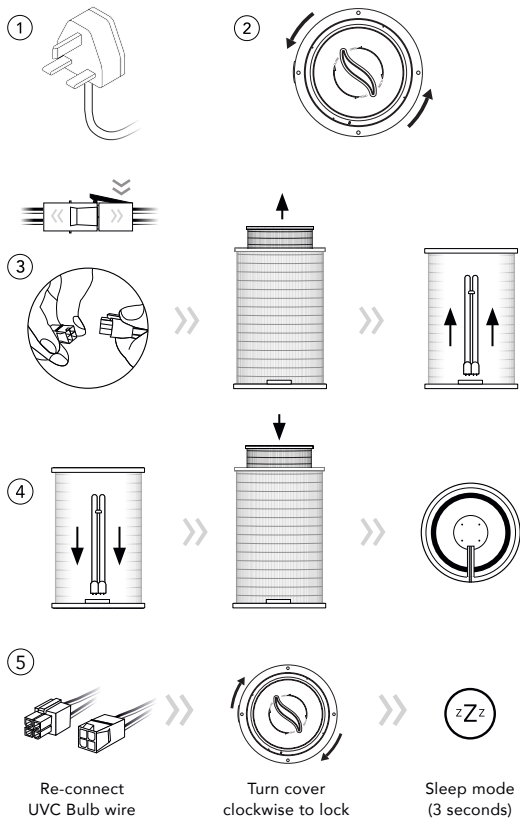
Disconnect the UVC bulb wire and draw out the filters from the unit. Remove the carbon filter from inside the HEPA filter before removing the UVC bulb.

4

Re-connect UVC bulb to the new HEPA filter cartridge, before replacing the carbon filter and then insert back into the unit.

5

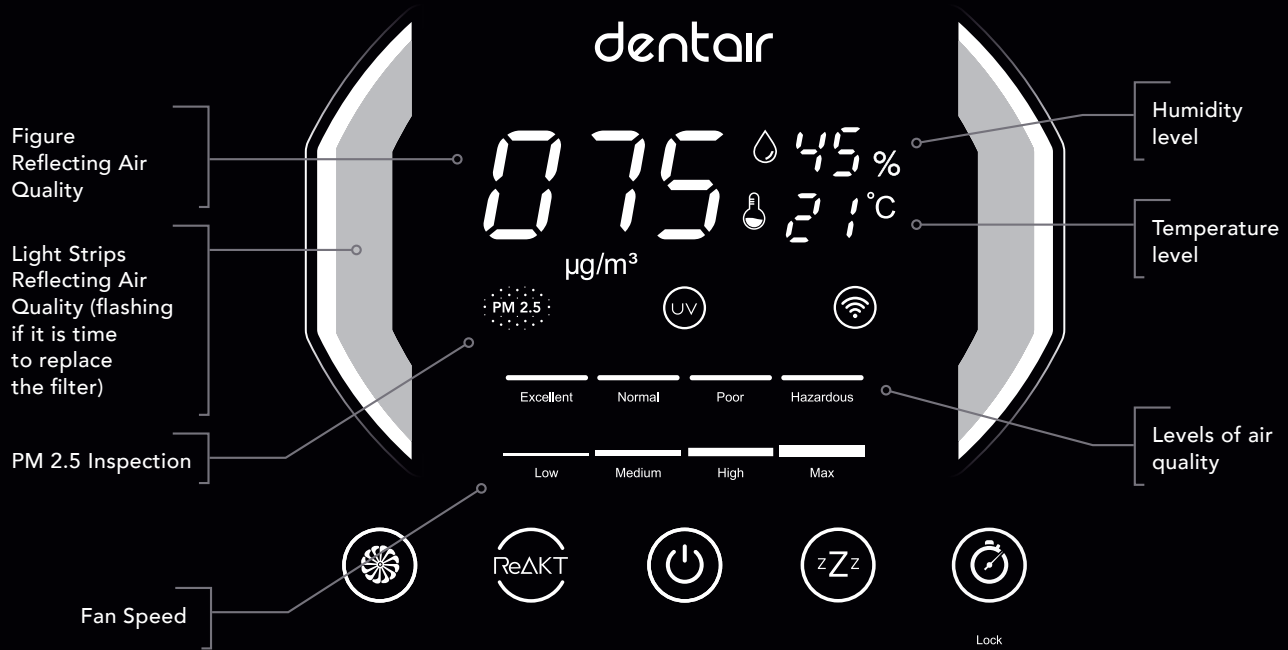
Re-connect UVC Bulb wire then put the cover back in place and turn clockwise to lock. Press the sleep button (Z) for three seconds.



Changing the UVC Bulb

- Please use regular PPE when changing the UVC Bulb and dispose correctly.
- UV radiation is dangerous for the eyes and skin. Do not operate the UVC emitter outside the appliance.

- 1 Disconnect the power supply and ensure the unit is off.
- 2 Turn the bottom cover anti-clockwise to access the filters.
- 3 Disconnect the UVC Bulb and then remove the filters.
- 4 Remove the UVC bulb by gently pulling away from the cartridge base. Insert new bulb by inserting into the empty slots.
- 5 Re-connect UVC wire then put cover back in place and turn clockwise to lock. Press the sleep button for three seconds.



Screen display introduction



Start Button

When you turn the air purifier on, the start button will turn red and go to 'stand by' mode. Press the button to start the unit. When on stand by, the power consumption is less than 2W. To shut it down completely unplug from the power source. When in ReAKT mode, the anion function runs automatically and the sensor begins to inspect the unit.





ReAKT Button

When started, the air purifier defaults to smart mode, then automatically switches wind speed in accordance with the air quality at that time. When you press another button the unit changes from smart mode to manual.



WiFi

When you start the air purifier for the first time, press the ReAKT button for 3 seconds and the  icon on the control panel with flash. Scan the QR code on the unit to access the DentAir® app. Once the connection is complete, you will be able to control the unit via a mobile phone. When you are using this mode the  light will be on.



Wind Speed Button

Press the wind speed button on the control panel or relevant buttons on the remote controller to set the wind speed at low, medium, high and max and back to low in circles. When you choose a certain speed the corresponding indicator light will turn on.



Sleep Mode

To put the unit into sleep mode, press the sleep button on the control panel or the remote control. During sleep mode the air purifier runs at the slowest speed and only the sleep button will light up on the control panel. To exit sleep mode, press any button (other than start) and the unit will return to the previous setting.



Lock Timer

Press the timer button for 3 seconds and the red light will come on, indicating the air purifier will run in the child lock mode. If you press the button for another 3 seconds the light will go off, the unit will exit this mode and all other buttons will be unlocked.

User guide

Filter replacement alert / instructions

When started, the air purifier will automatically calculate the remaining usage of the filter, according to the unit's running conditions and the internally stored algorithm. When the filter needs to be replaced, the light on the panel will continuously flash to alert you. Once you've replaced the filter, start the unit and press the sleep button for 3 seconds to turn the filter light off. The time memory will now re-set itself.



Please handle filters as medical waste and treat accordingly.



This appliance contains a UV-C emitter.

Timer Setting

When you start the air purifier, it will show the current PM 2.5 conditions on the control panel. Press the timer button and the panel will show a string of numbers. If you select the zero, the purifier will exit timer mode and the timer light will go off. When you've chosen your timing length, wait ten seconds and the unit will switch to that mode automatically (if no other buttons have been pressed).

Tilt Detection

If the air purifier tilts at an angle of 90 degrees or more, it will automatically power off. When placed back upright it will default to stand by. Press the start button and if the machine enters the smart mode then it is safe to use.



+44 (0)1932 320064 | +44 (0)7990 113723

Specifications

Specifications

Name:	DentAir®
Model:	FOZKYGB-03
Rated voltage:	220V-230V
Rated frequency:	50/60Hz
Input power:	78W
Main material:	Aerospace Cold-rolled Steel Housing
Dimensions:	(H)800 x (W)300 mm
Sensors:	Laser dust sensor / humidity and temperature sensor / TVOC odour sensor
Net weight:	15kg
Standby-power:	≤2W
Noise level:	≤60dB (A)
Indication:	LED indicators and figures
Control:	Touch, remote and WiFi
DC motor:	Nidec motor from Japan

Parameters

H13 clean air delivery rate:	60-600m ³ /h*
Particulate matter CCM:	P4-level
Particulate matter purification-related energy efficiency:	10.9 (high-efficient level)
Sterilization rate:	99.99%
Effective coverage area:	42-72m ²
Timer settings:	1-8 hours
Fan speed settings:	1-2-3-4-Auto
Pollution-level identification:	Numerical value; light strips
Remote control:	≤6m

Certification

EN 1822: Class 13 HEPA +/- Activated Carbon Filter
TUV Certified for European Low Voltage Directive (Directive 2014/35/EU) and the Electromagnetic Compatibility Directive ((EMC) Directive 2014/30/EU)

*CADR values are ±10% and given with the H13 Filter in place, values will vary depending on wind speed settings and your chosen filter configuration. You can use the calculator on our website www.dentair.co.uk for a guide to air changes per hour.

Cleaning and Maintenance

- 1 Always turn off the power by disconnecting the plug from the socket before carrying out maintenance, cleaning or changing the fan position.
- 2 Please make sure that your air purifier is completely stopped before cleaning.
- 3 Do not attempt to clean the HEPA/Carbon filter with a grinding sponge, scouring pad or hard brush.
- 4 Do not flush or drench the air filter.
- 5 Do not beat the air filter to clean any gathered dust.
- 6 When not in use, please store in a dry place with good ventilation.
- 7 Please ensure maintenance work is carried out by an authorised service centre.
- 8 If the power line or plug of the appliance is damaged, immediately stop using.
- 9 Cleaning and user maintenance shall not be made by children without supervision.

Warnings

Moving

To move your air purifier ensure it's switched off and unplugged from its power source.

Installation

- » The air purifier cannot work if the filter cover plate is not installed correctly.
- » Always ensure the inlet is more than 20cm away from anything that could obstruct the airflow, such as walls.

AC power cord

- » Do not excessively twist, pinch, bend or turn back the power cord, or the wire core will be exposed to the air or broken.
- » Do not drag or pull the power cord when unplugging.
- » Do not use an AC socket that is not compatible.
- » Do not use the provided power cord in other devices.

In use

- » If the unit makes unusual sounds, smells, overheats, or the fan rotates irregularly, immediately turn the unit off.
- » Do not insert anything into the air inlet or outlet of the unit.
- » Keep hair, fabric and other items away from the unit as they may be sucked in, which can cause injury, and damage to the system.
- » Do not sit on the air purifier, stand too close to it or tilt it in any way.
- » Open the ventilation system when using with another combustion appliance in order to prevent carbon monoxide poisoning.

Precautions

- » The appliance is not to be used by persons (including children) with reduced physical, sensory or mental capabilities, or lack of experience and knowledge, unless they are supervised or have been given instruction.
- » Children must not play with the appliance and should be supervised around it at all times.

Warranty

Terms and conditions

Bryant Dental will repair any DentAir® issue arising from a structural defect for a period of 5 years and from an electrical defect for a period of 2 years, without charge. The liability will not exceed the amount you originally paid for the product. The warranty does not cover defects arising from negligence, product modification, unauthorised repairs, accidental damage, theft, loss or acts of God.

Please keep the original purchase invoice as evidence of purchase.






Warranty Product details

First Repair Record:	
User Name:	
Product Model:	
Contact Information:	
Date of Purchase:	
Date of Repair:	
Malfunction Information:	
Repair Progress:	
The Original Serial No.:	



This product helps protect against certain particulate contaminants but does not eliminate exposure to or risk of contracting disease or infection.

  +44 (0)1932 320064 |  +44 (0)7990 113723

dentair.co.uk

Bryant Dental, The Barns, Hilltop Farm, Lyne Lane, Lyne, KT16 0AW
DentAir® and Bryant Dental® are registered trademarks in the United Kingdom and Australia.
Registered in England & Wales No. 10396020. Registered in Australia No. 634 752 980

IFU_EN1_0/IF June 2020